



REGIONAL SPECIALISED METEOROLOGICAL CENTRE -TROPICAL CYCLONES, NEW DELHI TROPICAL WEATHER OUTLOOK

DEMS-RSMC TROPICAL CYCLONES NEW DELHI DATED 27.06.2025

TROPICAL WEATHER OUTLOOK FOR THE NORTH INDIAN OCEAN (THE BAY OF BENGAL AND THE ARABIAN SEA) VALID FOR THE NEXT 168 HOURS ISSUED AT 0600 UTC OF 27.06.2025 BASED ON 0300 UTC OF 27.06.2025.

BAY OF BENGAL:

Yesterday's **low pressure area** over northwest Bay of Bengal and adjoining coastal areas of Odisha and West Bengal lay over north Odisha and adjoining Gangetic West at 0000 UTC and became less marked at 0300 UTC of today, the 27th June 2025. However, the associated upper air cyclonic circulation has merged with the above seasonal **east-west trough**.

A fresh upper-air cyclonic circulation is likely to develop over north Bay of Bengal and adjoining coastal Bangladesh & West Bengal around 29th June, 2025. Under its influence a **low-pressure area** is likely to form over the same region during subsequent 24 hours.

Scattered to broken low and medium clouds with embedded intense to very intense convection lay over north & central Bay of Bengal and Andaman Sea. Scattered low and medium clouds with embedded moderate to intense convection lay over south Bay of Bengal.

*PROBABILITY OF CYCLOGENESIS (FORMATION OF DEPRESSION) DURING NEXT 168 HRS:

24 HOURS	24-48 HOURS	48-72 HOURS	72-96 HOURS	96-120 HOURS	120-144 HOURS	144-168 HOURS
NIL	NIL	NIL	NIL	NIL	NIL	NIL

*NOTE: EVERY 24HR FORECAST IS VALID UPTO 0300 UTC (0830 IST) OF NEXT DAY

ARABIAN SEA:

Scattered to broken low and medium clouds with embedded intense convection lay over north & central Arabian Sea, Scattered low and medium clouds with embedded moderate to intense convection lay over south Arabian Sea, Lakshadweep Islands area, Maldives & Comorin area.

*PROBABILITY OF CYCLOGENESIS (FORMATION OF DEPRESSION) DURING NEXT 168 HRS:

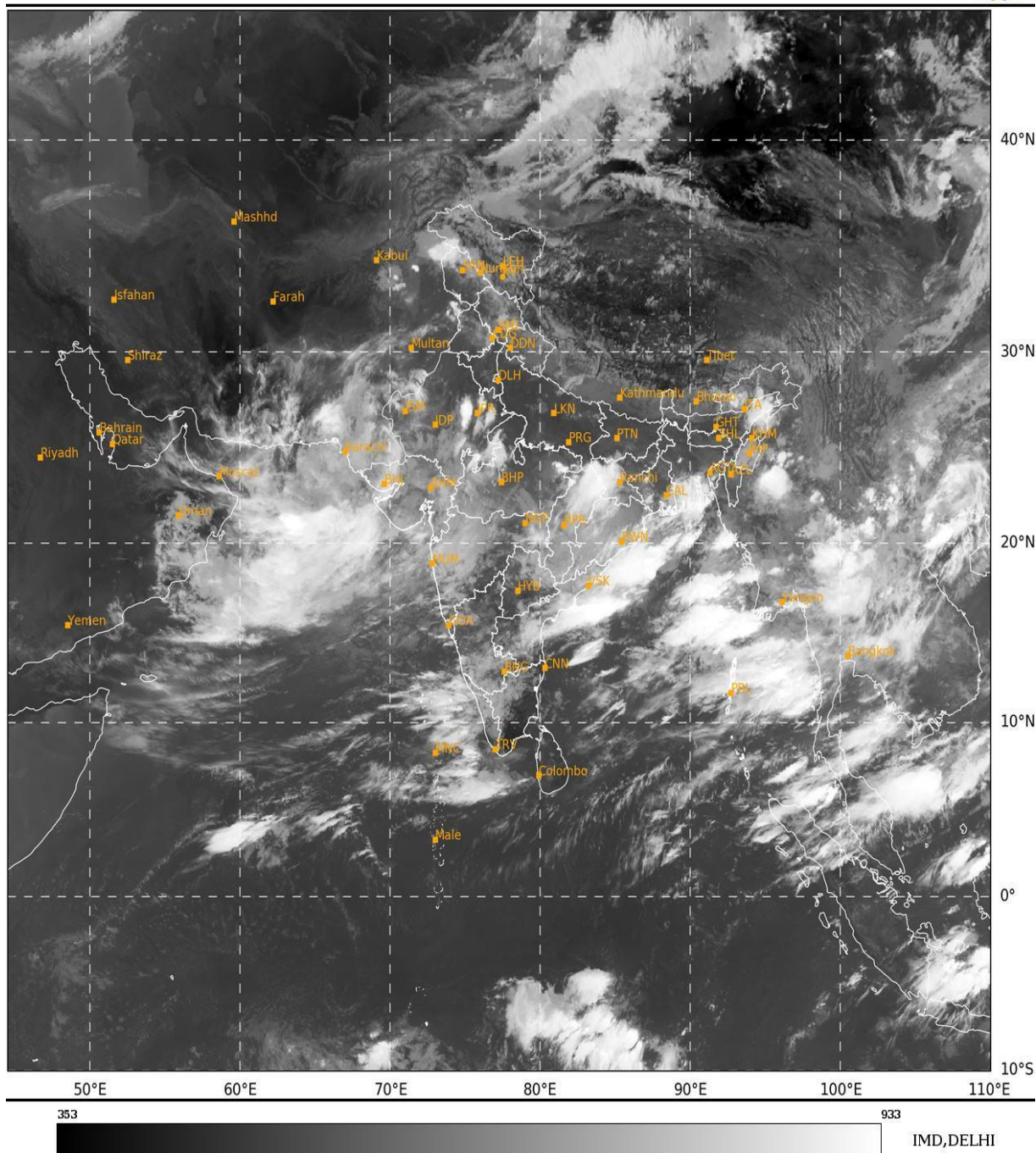
24 HOURS	24-48 HOURS	48-72 HOURS	72-96 HOURS	96-120 HOURS	120-144 HOURS	144-168 HOURS
NIL	NIL	NIL	NIL	NIL	NIL	NIL

*NOTE: EVERY 24HR FORECAST IS VALID UPTO 0300 UTC (0830 IST) OF NEXT DAY

REMARKS: NIL

SAT : INSAT-3DR IMG
IMG_TIR1 10.8 um
L1C Mercator

27-06-2025/(0315 to 0342) GMT
27-06-2025/(0845 to 0912) IST



Cloud distribution: (a) Isolated: <25%, Scattered:25-50%, Broken: 51-75%, Solid:>75%, Convection Intensity: (a) Weak: Cloud Top Temperature(CTT)>-25°C,(b)Moderate:CTT:-25°Cto-40°C,(c)Intense:CTT: -41°Cto -70°Cand(d)Very Intense::Less than -70°C
PROBABILITYOFCYCLOGENESIS(FORMATIONOFDEPRESSION):NIL:0%,LOW:1-33%,MODERATE:34-66%ANDHIGH:67-100%
ThisisaguidanceBulletinforWMO/ESCAPPanelMembercountries.VisitrespectiveNationalwebsitesforCountryspecificBulletins